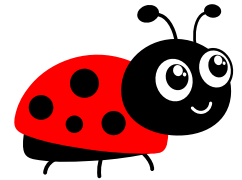


LADYBUG CLASS FALL 2025 OVERVIEW



(ages 2 years - 2.5 years)



WHAT IS NEEDED TO REGISTER

- Annual Non-Refundable preschool registration fee of \$125
- Birth Certificate
- Current DCFS medical form showing vaccinations
- Completed registration form with signed waiver
- Emergency contact form completed and signed
- Documented food allergy information if applicable

Documents found on the Park Districts website
www.HampshireParkDistrict.org or picked up at
location

THEIR WORLD IS OPENING UP, SO WE BRING A WORLD OF LEARNING TO THEM!

Your two year old is unique little Ladybug. Two year old's are full of curiosity and so eager to explore every facet of their environment. This is the time when they are discovering that they need to share with others. Our program encourages your child to investigate and safely discover the environment under the gentle guidance of the teacher.

Our goal is to broaden your child's range of experiences through the careful selection of appropriate equipment and caring staff. Your child is encouraged to reach for goals tailored to their individual goals, not group goals. Our staff is trained to guide your child through the various stages of development when they are physically emotionally and socially ready.

Self-help skills such as toilet training, dressing, feeding and washing hands are all important facets of our program. Art, Music, Finger-painting, games, sand and water play, exercise, dancing and imaginative play are all incorporated in our daily program.

Ladybug class is held at 441 E. Jefferson Hampshire IL 60140. Children are learning through age-appropriate active play with social interactions with peers and teachers.

As your child engages in these activities they will increase their vocabulary and language skills, develop their fine and gross motor skills and sharpen their auditory and visual discrimination abilities. Your child is busy laying the foundation upon which higher skills and concepts will be built.

We are aware that cooperative planning and good communication between our staff and parents is essential in providing consistent quality care. Our parent communication app will be updated of your child's daily activities.

Daycare registration runs continually throughout the year based on availability. This program is an all day program that serves 2 snacks and lunch, breakfast is also optional served from 6:30-7:30 am. This is all included with your weekly tuition. We encourage the children to arrive no later than 9 am.

DAYCARE HOURS: 6:30 a.m. to 5:30 p.m.

Attendance based upon availability

TUITION

Please call for Tuition rates , information and availability