

**HAMPSHIRE TOWNSHIP
PARK DISTRICT
COMPREHENSIVE PARK MASTER PLAN**

**Neighborhood and
Community Park
Service Area Analysis
For Existing Development**

Figure 4 - 1

Service Areas

- 1 Mile Radius Service Area for Community Parks
- 1/2 Mile Radius Service Area for Neighborhood Parks

Parks and Schools

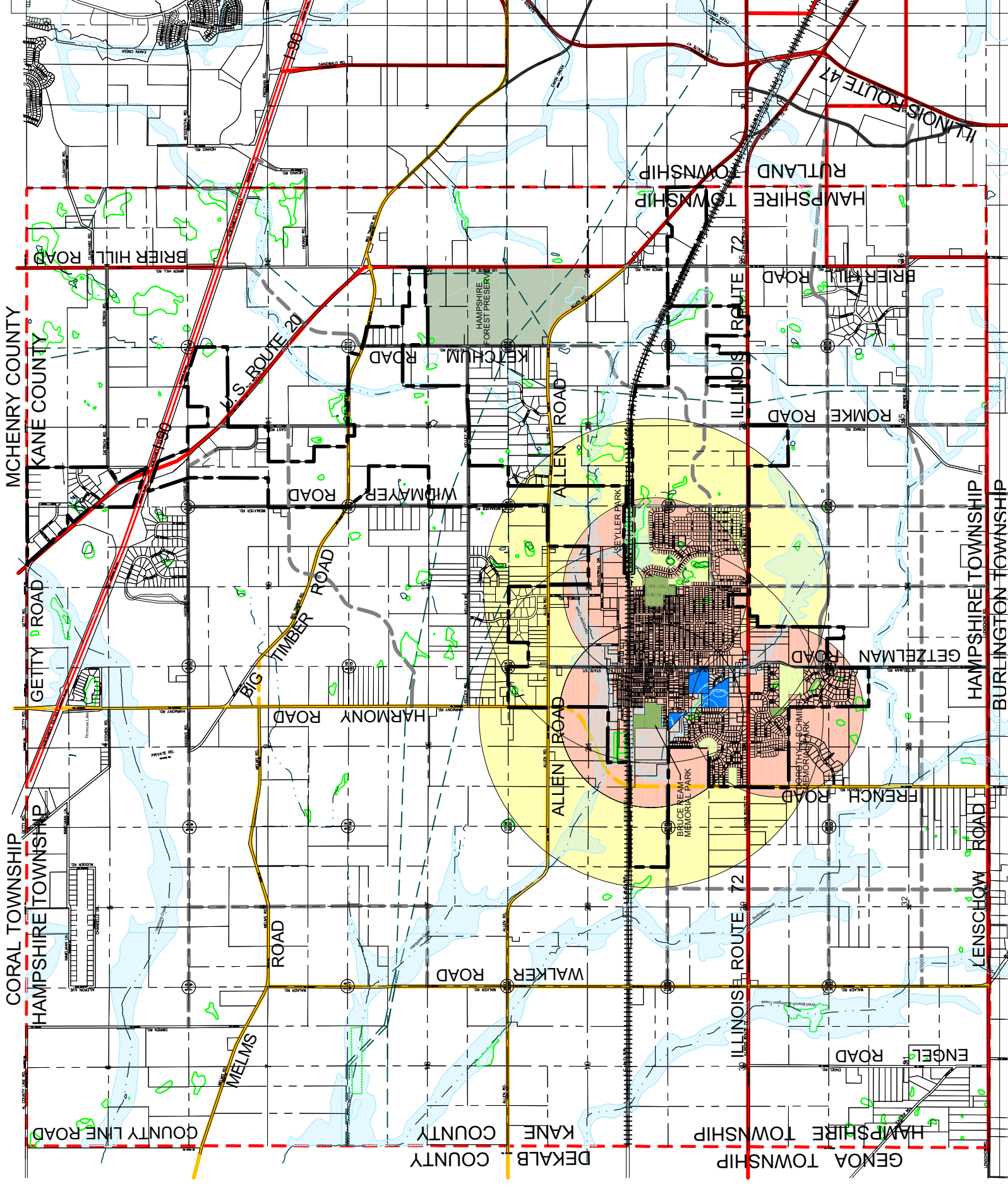
- Existing Hampshire Township Park District Parks
- Open Space
- Existing School Sites
- Kane County Forest Preserve District

Transportation

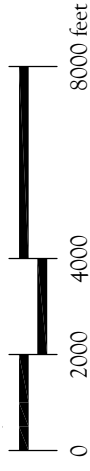
- Railroads
- Tollway
- Existing Arterial
- Existing Rural Collector
- Proposed Rural Collector
- Existing Local Collector
- Proposed Local Collector

Other

- Hampshire Township Park District Boundary
- Village of Hampshire Corporate Limits
- 100 Year Floodplain
- 500 Year Floodplain
- Wetland
- Stream
- Pipeline



Scale 1" = 4000'



Base Map prepared by:
Engineering Enterprises, Inc.
Consulting Engineer

April 20, 2005

Land Design Collaborative, Inc.

page 4-19